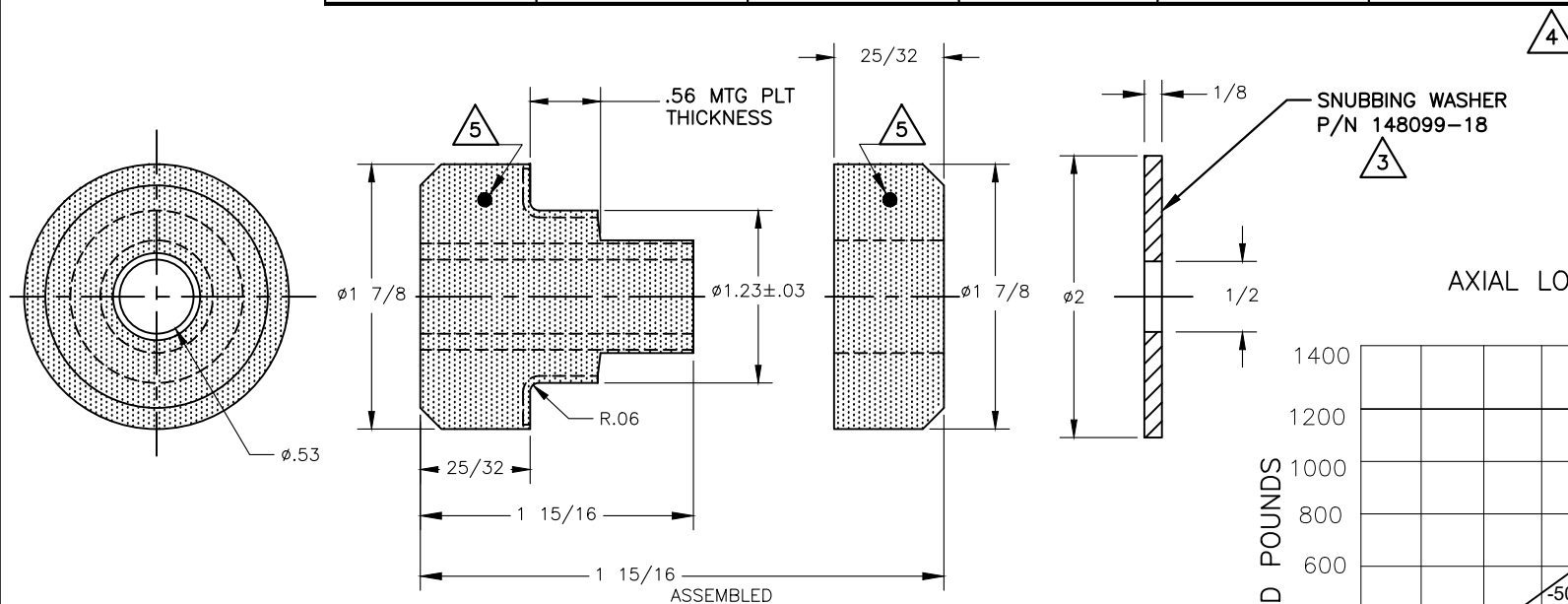
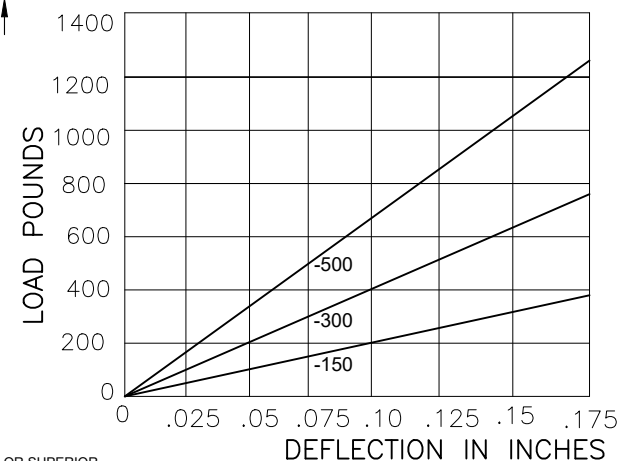


TYPE RBS2 ELASTOMERIC RING & BUSHING BRIDGE BEARING NEOPRENE

PART NO.	MODEL NO.	AXIAL STATIC LOAD MAX LBS. @.075"	RADIAL STATIC LOAD MAX LBS. @.03"	DUROMETER SHORE-A ±5	COLOR CODE	MATERIAL
770110-1	RBS2-01	500	200	70	PURPLE/GRN	BR BRG NEO
770110-30	RBS2-30	△	△	30	BLACK	
RBS2-300	RBS2-300	300	120	60	YELLOW	
RBS2-150	RBS2-150	150	60	50	WHITE	



AXIAL LOAD Vs. DEFLECTION



NOTES:

- ALL DIMENSIONS ARE IN INCHES .INTERPRET PER ANSI Y14
- ALL DIMENSIONS ARE NOMINAL AND FOR REFERENCE ONLY.
- SNUBBING WASHER IS OPTIONAL, ORDER SEPERATE ON PURCHASE ORDER.
- FINISH :YELLOW ZINC PLATED PER ASTM B633 TYPE II, CLASS SC 3 UNLESS OTHERWISE SPECIFIED .
- COLOR-CODE "MARK "IS AN ACCEPTABLE ADDITION TO MODEL STAMPING .
- STAMPING SURFACE LOCATION AS MARKED ON DRAWING.
- CURRENTLY UNDER ENGINEERING REVIEW CONTACT VMC FOR AVAILABILITY

OTHER MATERIALS, COMPOUNDS, OR FINISHES WITH EQUAL OR SUPERIOR PROPERTIES MAY BE SUBSTITUTED AS THEY BECOME AVAILABLE.



CERTIFIED FOR:

JOB NAME: _____

CUSTOMER : _____

CUSTOMER P.O.: _____

SALES ORDER: _____

MODEL RBS2
RING AND BUSHING
BRIDGE BEARING
ELASTOMERIC ISOLATOR
WITH WEAR PLATE



VMC GROUP
THE POWER OF TOGETHER
Bloomingdale, NJ 07403
Houston, TX 77041

SCALE :

NONE

SHEET:

1

DRAWING NO.:

REVISION

